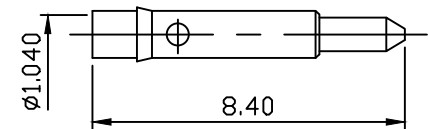
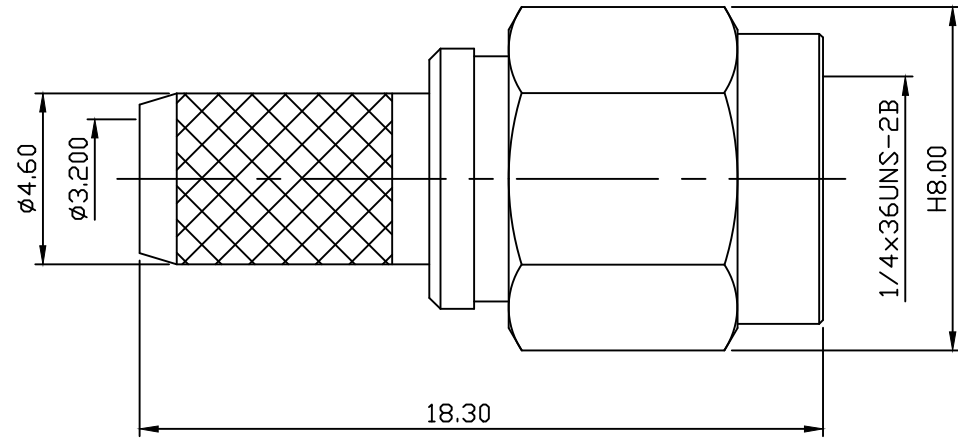
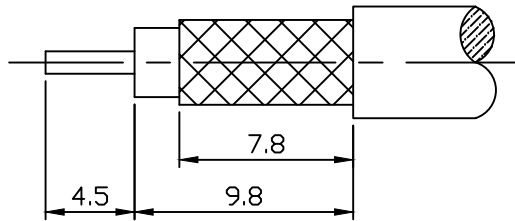


1. INTERFACE PER MIL-STD-348
2. COUPLING NUT RETENTION: 15 INCH*LBS
3. COUPLING NUT RETENTION: 60 LBS AXIAL
4. CONTACT RETENTION: 6 LBS AXIAL
5. INSULATOR RETENTION: 6 LBS AXIAL
6. DUREBILITY: TEST AFLER 100 CYCLES



MATERIAL : BODY-BRASS
 CONTACT-BRASS
 INSULATOR-TEFLON
 SHELL-BRASS
 C WASHER-SUS304
 SI RUBBER-SILICONE
 RING-BRASS

FINISH : BODY-NICKEL PLATING
 CONTACT-GOLD PLATING OVER NICKEL
 SHELL-NICKEL PLATING
 RING-NICKEL PLATING

DIMENSIONS ARE IN MILLIMETERS
 TOLERANCE

· ×	±0.5	ANGLE ±3°	SCALE	5:1
· × ×	±0.1		REV	A-2
· × × ×	±0.05		DRAWN	潘曉臨
DATE		100.04.12		
APPROVAL		DATE		

圖 號	不 同 之 處
806-110401	SHELL不同(TGN)
806-110402	BODY、SLEEVE不同(TGN)
806-110403	BODY有階層(TGG)
806-110404	SHELL反牙(TGN)
806-110405	SHELL-SUS303(TGG)
806-110406	BODY、SHELL-SUS303(TGP)
806-110407	同806-1104設計(TGG)

C&C ELECTRONICS CONNECTORS INC

TITLE SMA STRAIGHT PLUG CRIMP FOR RG₁₄₁⁵⁸u

DRAWING NO 806-1104

FILE NO 806-0022