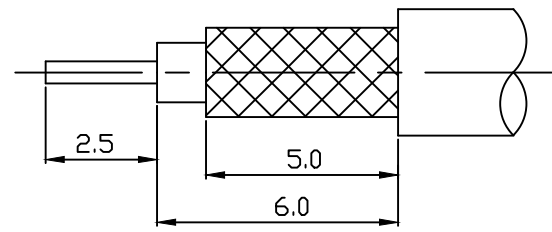
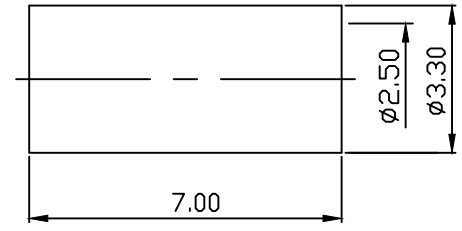
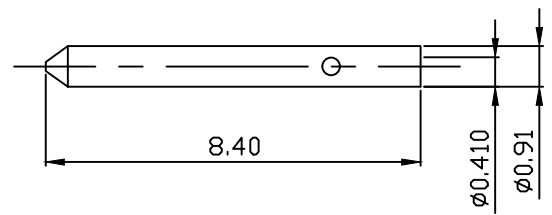
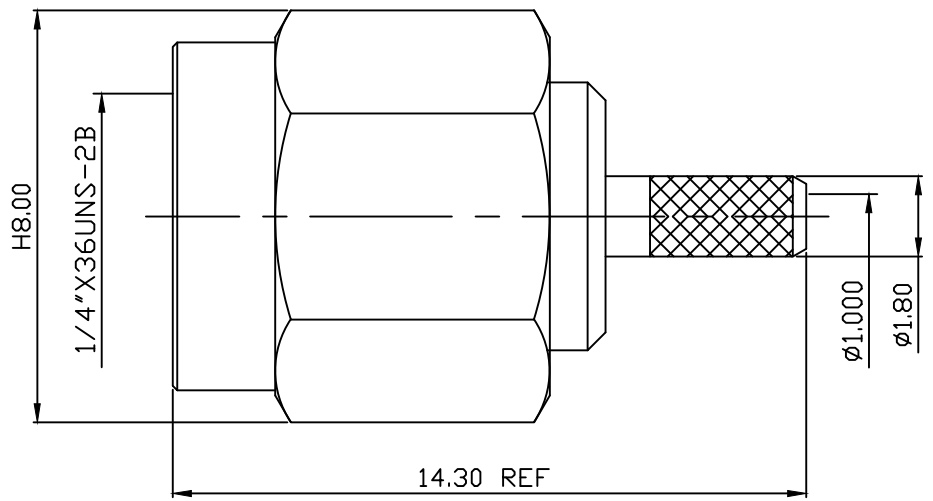


Impedance: 50ohm
 Frequency Range: 0~12.4GHZ
 VSWR: 1:1.3
 Voltage Rating: 250 volts rms max
 Dielectric withstanding Voltage:
 500 volts rms max
 Insulation Resistance:
 5000 meg ohm min



MATERIAL: BODY-BRASS
 CONTACT PIN-BRASS
 INSULATOR-TEFLON
 SHELL-BRASS
 C WASHER-SUS304
 SI RUBBER-SILICONE
 FERRULE-BRASS
FINISH: BODY-GOLD PLATING OVER NICKEL
 CONTACT PIN-GOLD PLATING OVER NICKEL
 SHELL-GOLD PLATING OVER NICKEL
 FERRULE-GOLD PLATING OVER NICKEL

| | |
|------------|-------------------|
| 圖號 | 不同之處 |
| 806-113101 | 同806-1131設計 (TGB) |

| | | | | | |
|--|-----------|---------------------|--|----------------------------------|--|
| DIMENSIONS ARE IN MILLIMETERS TOLERANCE | | SCALE 6:1 | | C&C ELECTRONICS CONNECTORS INC | |
| ·× ±0.5 | ANGLE ±3° | REV A-0 | | TITLE SMA MALE CRIMP FOR RG 178u | |
| ·×× ±0.1 | | DRAWING NO 806-1131 | | | |
| ·××× ±0.05 | | FILE NO 806-0101 | | | |
| DRAWN 許哲維 | | DATE 92.09.01 | | | |
| APPROVAL | | DATE | | | |