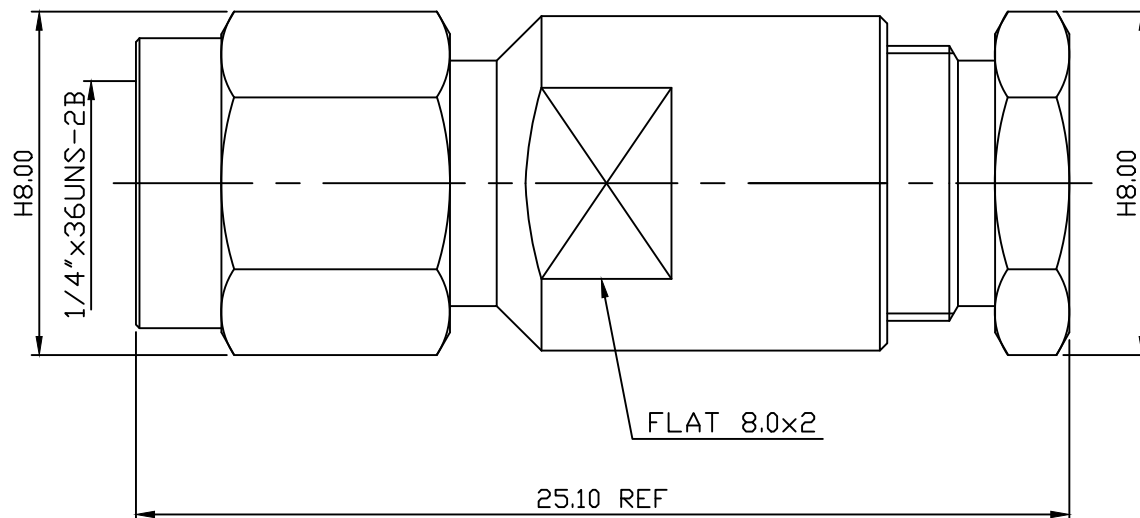
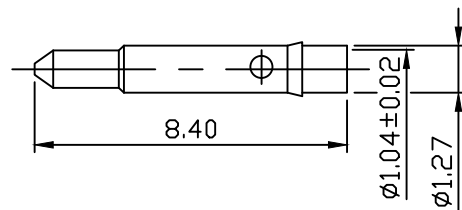


1. INTERFACE PER MIL-STD-348
2. COUPLING NUT RETENTION:15 INCH*LBS
3. COUPLING NUT RETENTION:60 LBS AXIAL
4. CONTACT RETENTION:6 LBS AXIAL
5. INSULATOR RETENTION:6 LBS AXIAL
6. DUREBILITY: TEST AFLER 100 CYCLES



MATERIAL : BODY-BRASS
 CONTACT-BRASS
 INSULATOR-TEFLON
 SLEEVE-BRASS
 SHELL-BRASS
 C WASHER-SUS304
 NUT-BRASS
 WASHER-BRASS
 SI RUBBER-SILICONE

FINISH : BODY-GOLD PLATING OVER NICKEL
 SHELL-GOLD PLATING OVER NICKEL
 CONTACT-GOLD PLATING OVER NICKEL
 SLEEVE-GOLD PLATING OVER NICKEL
 WASHER-GOLD PLATING OVER NICKEL
 NUT-GOLD PLATING OVER NICKEL

DIMENSIONS ARE IN MILLIMETERS				C&C ELECTRONICS CONNECTORS INC	
TOLERANCE				TITLE SMA STRAIGHT PLUG CLAMP RG 142u	
· × ±0.5	ANGLE ±3°	SCALE 5:1	DRAWING NO 806-2103		
· × × ±0.1		REV A-2	FILE NO 806-0621		
· × × × ±0.05		DRAWN 潘曉臨		DATE 100.04.09	
APPROVAL		DATE			