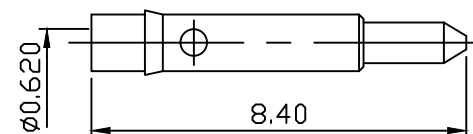
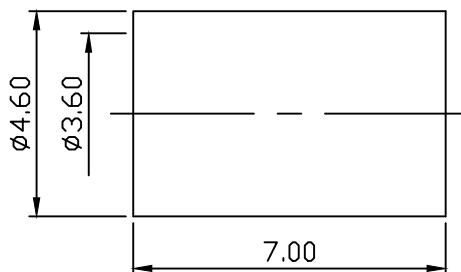
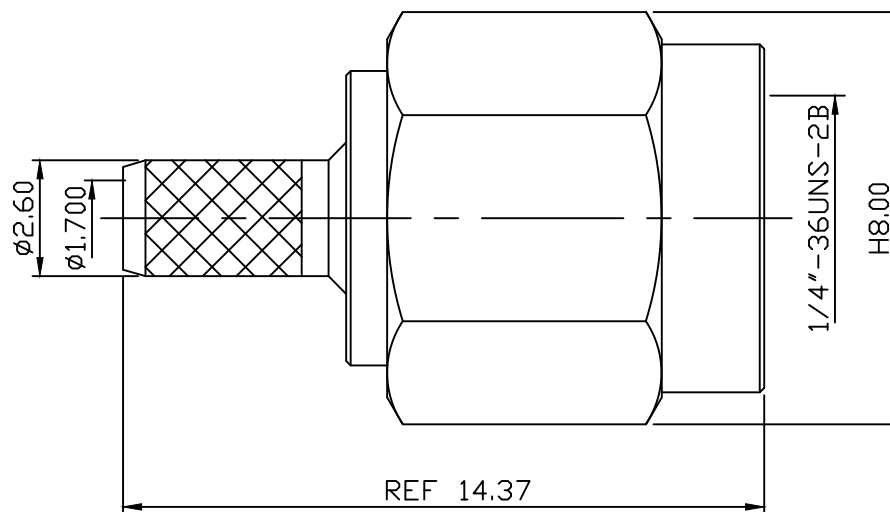


1. INTERFACE PER MIL-STD-348
2. COUPLING NUT RETENTION:15 INCH*LBS
3. COUPLING NUT RETENTION:60 LBS AXIAL
4. CONTACT RETENTION:6 LBS AXIAL
5. INSULATOR RETENTION:6 LBS AXIAL
6. DUREBILITY: TEST AFLER 100 CYCLES



MATERIAL : BODY-BRASS
 INSULATOR-TEFLON
 CONTACT-BRASS
 SHELL-BRASS
 C WASHER-BeCu
 SI RUBBER-SILICONE
 FERRULE-BRASS

FINISH : BODY-GOLD PLATING OVER NICKEL
 CONTACT-GOLD PLATING OVER NICKEL
 SHELL-GOLD PLATING OVER NICKEL
 FERRULE-GOLD PLATING OVER NICKEL

DIMENSIONS ARE IN MILLIMETERS TOLERANCE			C&C ELECTRONICS CONNECTORS INC		
· × ±0.5	ANGLE ±3°	SCALE 6:1	TITLE SMA MALE CRIMP FOR RD 316u		
· × × ±0.1		REV A-2	DRAWING NO 806-110503		
· × × × ±0.05		DRAWN 潘曉臨	DATE 100.04.12	FILE NO 806-0032	
APPROVAL		DATE			