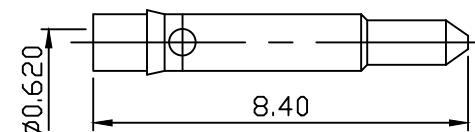
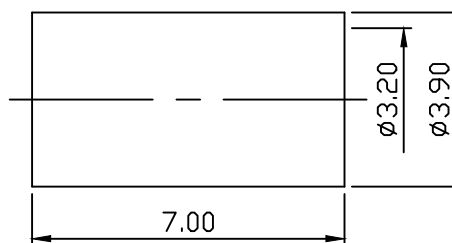
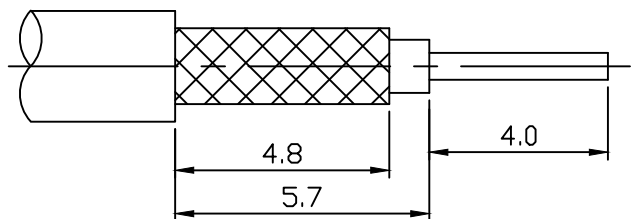
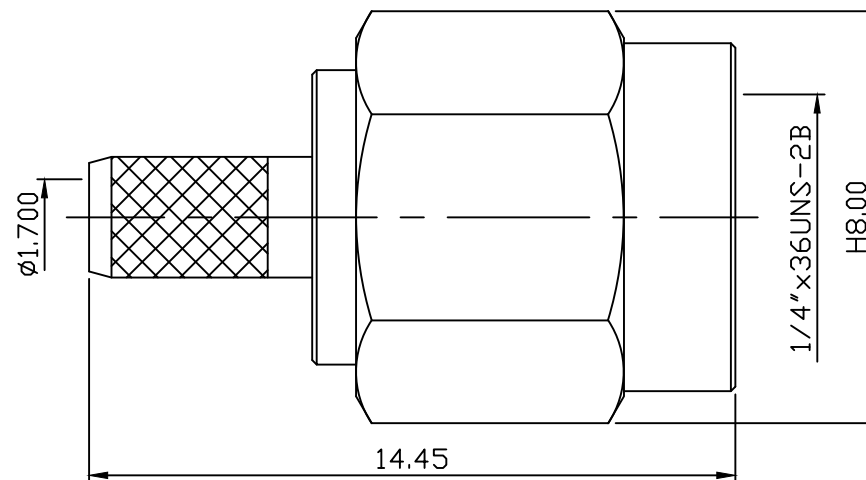


1. INTERFACE PER MIL-STD-348
2. COUPLING NUT RETENTION:15 INCH*LBS
3. COUPLING NUT RETENTION:60 LBS AXIAL
4. CONTACT RETENTION:6 LBS AXIAL
5. INSULATOR RETENTION:6 LBS AXIAL
6. DUREBILITY: TEST AFLER 100 CYCLES

IMPEDANCE:50 OHM
 FREQUENCY RANGE:0 TO 18.0 GHZ
 VSWR:1.05+0.005XF GHZ MAX(STRAIGHT)
 1.15+0.015XF GHZ MAX(RIGHT ANGLE)
 INSULATION RESISTANCE:5,000 MEGOHMS MIN



MATERIAL : BODY-BRASS
 CONTACT-BRASS
 INSULATOR-TEFLON
 SHELL-BRASS
 C WASHER-SUS 304
 SI RUBBER-SILICONE
 FURRULE-BRASS

FINISH : BODY-GOLD PLATING OVER NICKEL
 CONTACT-GOLD PLATING OVER NICKEL
 SHELL-GOLD PLATING OVER NICKEL
 FURRULE-GOLD PLATING OVER NICKEL

DIMENSIONS ARE IN MILLIMETERS TOLERANCE			C&C ELECTRONICS CONNECTORS INC		
·× ±0.5	ANGLE ±3°	SCALE 6:1	TITLE SMA MALE CONNECTOR FOR RG 174u 316u		
·×× ±0.1		REV A-1	DRAWING NO 806-110505		
·××× ±0.05		DRAWN 潘曉臨	DATE 100.04.12	FILE NO 806-0549	
APPROVAL		DATE			