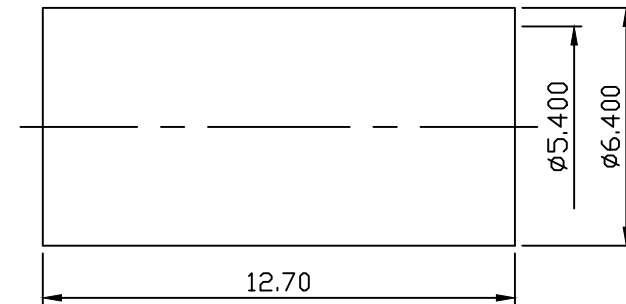


STRIPPING DIMENSION FOR REFERENCE ONLY



MATERIAL : BODY-BRASS  
 INSULATOR-TEFLON  
 CONTACT-BeCu  
 FURRULE-BRASS  
 FINISH : BODY-GOLD PLATING OVER NICKEL  
 FURRULE-GOLD PLATING OVER NICKEL  
 CONTACT-GOLD PLATING OVER NICKEL

DIMENSIONS ARE IN MILLIMETERS TOLERANCE			C&C ELECTRONICS CONNECTORS INC	
· × ±0.5	ANGLE ±3°	SCALE 6:1	TITLE SMA STRAIGHT JACK CRIMP FOR RG <sup>58</sup> <sub>141</sub> u	
· × × ±0.1		REV A-0	DRAWING NO 806-120701	
· × × × ±0.05		DRAWN 郭姿良 DATE 90.09.13		FILE NO 806-0561
APPROVAL		DATE		