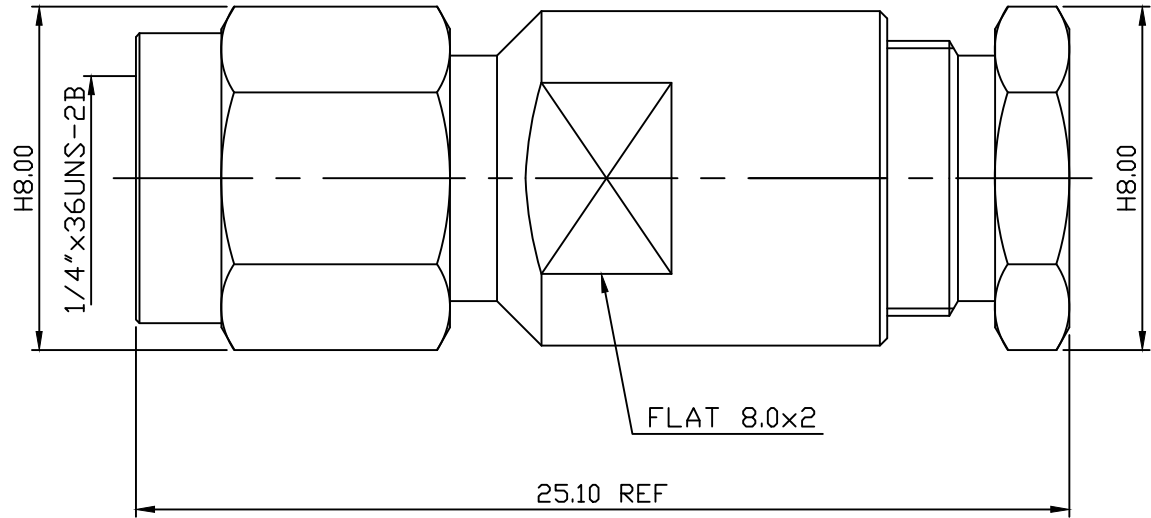
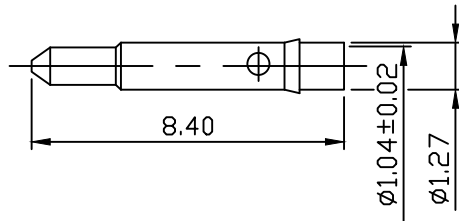


1. INTERFACE PER MIL-STD-348
2. COUPLING NUT RETENTION: 15 INCH*LBS
3. COUPLING NUT RETENTION: 60 LBS AXIAL
4. CONTACT RETENTION: 6 LBS AXIAL
5. INSULATOR RETENTION: 6 LBS AXIAL
6. DUREBILITY: TEST AFLER 100 CYCLES



MATERIAL : BODY-BRASS
 CONTACT-BRASS
 INSULATOR-TEFLON
 SLEEVE-BRASS
 SHELL-BRASS
 C WASHER-SUS304
 NUT-BRASS
 WASHER-BRASS
 SI RUBBER-SILICONE

FINISH : BODY-NICKEL PLATING
 SHELL-NICKEL PLATING
 CONTACT-GOLD PLATING OVER NICKEL
 SLEEVE-NICKEL PLATING
 WASHER-NICKEL PLATING
 NUT-NICKEL PLATING

DIMENSIONS ARE IN MILLIMETERS				C&C ELECTRONICS CONNECTORS INC	
TOLERANCE				TITLE SMA STRAIGHT PLUG CLAMP RG ⁵⁸ / _{141u}	
· × ±0.5	ANGLE ±3°	SCALE 5:1	DRAWING NO 806-210101		
· × × ±0.1		REV A-2			
· × × × ±0.05		DRAWN 潘曉臨	DATE 100.04.09	FILE NO 806-0620	
APPROVAL	DATE				