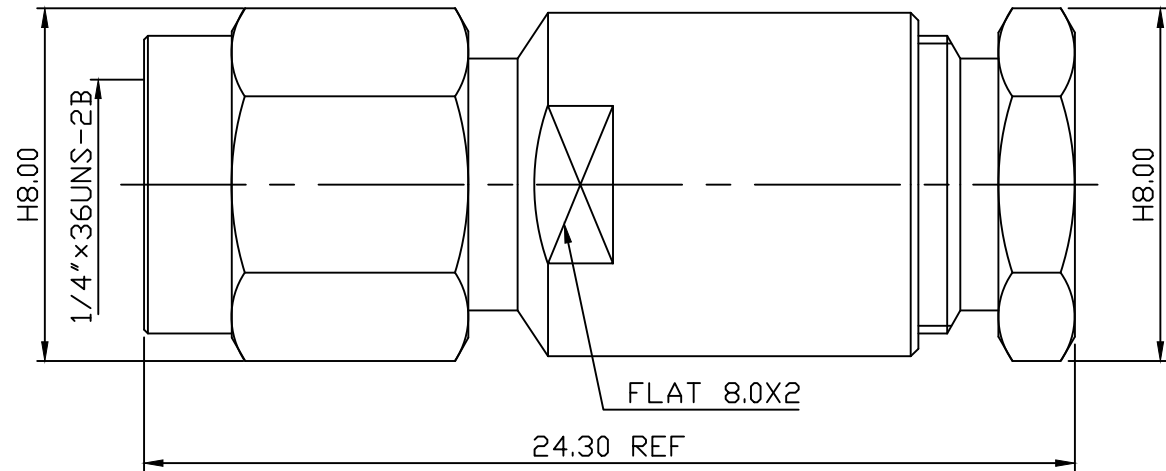
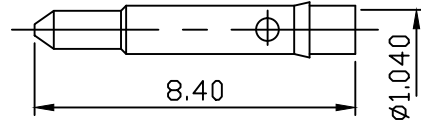


1. INTERFACE PER MIL-STD-348
2. COUPLING NUT RETENTION:15 INCH*LBS
3. COUPLING NUT RETENTION:60 LBS AXIAL
4. CONTACT RETENTION:6 LBS AXIAL
5. INSULATOR RETENTION:6 LBS AXIAL
6. DUREBILITY: TEST AFLER 100 CYCLES



MATERIAL : BODY-BRASS
 SLEEVE-BRASS
 SI RUBBER-SILICONE
 WASHER-BRASS
 NUT-BRASS
 C WASHER-SUS 304
 SHELL-BRASS
 CONTACT-BRASS
 INSULATOR-TEFLON

FINISH : BODY-NICKEL PLATING
 SLEEVE-NICKEL PLATING
 WASHER-NICKEL PLATING
 NUT-NICKEL PLATING
 SHELL-NICKEL PLATING
 CONTACT-GOLD PLATING OVER NICKEL

DIMENSIONS ARE IN MILLIMETERS			C&C ELECTRONICS CONNECTORS INC	
TOLERANCE				
· × ±0.5	ANGLE ±3°	SCALE 5:1	TITLE SMA MALE STARIGHT CLAMP FOR 58u"142u"223u"400u"	
· × × ±0.1		REV A-2		
· × × × ±0.05		DRAWN 潘曉臨	DATE 100.04.09	DRAWING NO 806-2106
APPROVAL		DATE	FILE NO 806-0488	