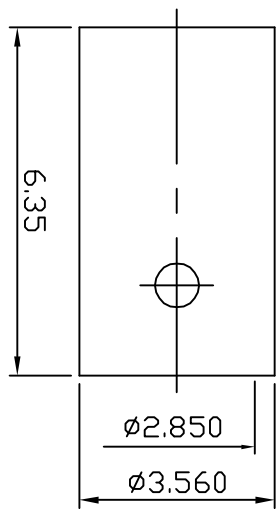
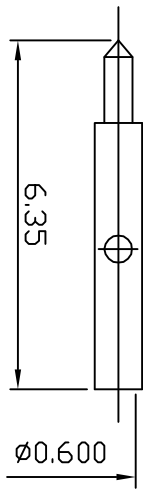
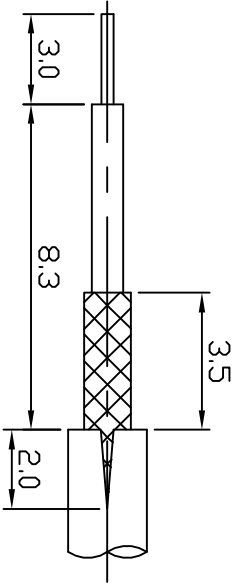


MATERIAL : BODY-SUS 316
 INSULATOR-TEFLON
 CONTACT-BRASS
 S1 RUBBER-SILICONE
 C WASHER-SUS 304
 SHELL-SUS 316
 FERRULE-BRASS



FINISH : BODY-GOLD PLATING OVER NICKEL
 CONTACT-GOLD PLATING OVER NICKEL
 SHELL-PASSIVATED
 FURRULE-NICKEL PLATING

DIMENSIONS ARE IN MILLIMETERS

| | | | | | |
|----------|-------|-------|----------|-------|-----|
| ..x | ±0.5 | | | | |
| .x x | ±0.1 | ANGLE | ±3° | | |
| ..x x x | ±0.05 | | | | |
| DRAWN | 潘曉臨 | DATE | 96.07.19 | SCALE | 7:1 |
| APPROVAL | | DATE | | REV | A-0 |

C&C ELECTRONICS CONNECTORS INC

| | |
|------------|------------------------------------|
| TITLE | SSMA FEMALE CRIMP FOR RG 174L 316L |
| DRAWING NO | 804-110202 |
| FILE NO | 804-0071 |