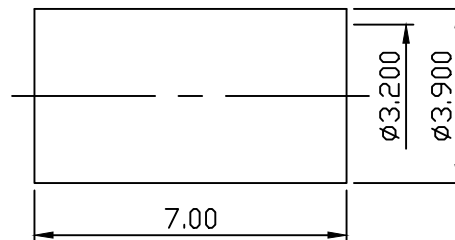


STRIP DIMENSION



MATERIAL : BODY-BRASS
 CONTACT-BRASS
 INSULATOR-TEFLON
 SLEEVE-BRASS
 FURRULE-BRASS
 FINISH : BODY-GOLD PLATING OVER NICKEL
 CONTACT-GOLD PLATING OVER NICKEL
 SLEEVE-GOLD PLATING OVER NICKEL
 FURRULE-GOLD PLATING OVER NICKEL

DIMENSIONS ARE IN MILLIMETERS TOLERANCE				C&C ELECTRONICS CONNECTORS INC	
· × ±0.5	ANGLE ±3°	SCALE 6:1	TITLE SMB STRAIGHT JACK CRIMP FOR RG 174u 188A/U 316u		
· × × ±0.1		REV A-1			
· × × × ±0.05		DRAWN 郭姿良	DATE 90.11.12	DRAWING NO 808-1203	
APPROVAL		DATE	FILE NO 808-0002		