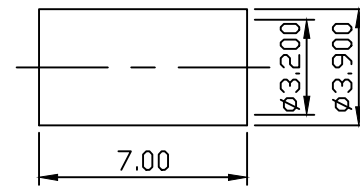
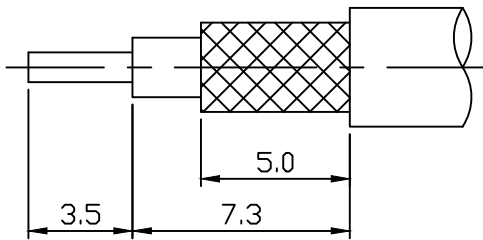


MATERIAL : BODY-BRASS  
 CONTACT PIN-BRASS  
 INSULATOR-TEFLON  
 GASKET-BRASS  
 WASHER-BRASS  
 SHELL-BRASS  
 GASKET-RUBBER  
 CONTACT-BRASS  
 FURRULE-BRASS  
 FINISH : BODY-NICKEL PLATING  
 GASKET-NICKEL PLATING  
 WASHER-NICKEL PLATING  
 SHELL-NICKEL PLATING  
 FURRULE-NICKEL PLATING  
 CONTACT PIN-GOLD PLATING OVER NICKEL  
 CONTACT-GOLD PLATING OVER NICKEL



DIMENSIONS ARE IN MILLIMETERS				C&C ELECTRONICS CONNECTORS INC	
TOLERANCE					
· ×	±0.5	ANGLE ±3°	SCALE	TITLE	
· × ×	±0.1		REV	TNC MALE REVERSE POLARITY	
· × × ×	±0.05		A-1	CRIMP FOR RG 316 μ	
DRAWN 郭姿良		DATE 91.03.08		DRAWING NO 860-1109	
APPROVAL		DATE		FILE NO 860-0024	